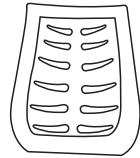


MODEL 530

High Back Mesh Chair

Parts Listing

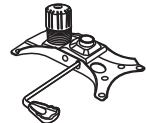
A
Chair Back
1 Unit



B
Chair Seat
1 Unit



C
Seat Mechanism
1 Unit



D
Right Arm
1 Unit



E
Left Arm
1 Unit



F
Gas Lift
1 Unit



G
Chair Base
1 Unit



H
Casters
5 Units



I
M6x25mm Screws
4 Units



J
M6x20mm Screws
4 Units



K
M6x35mm Screws
4 Units



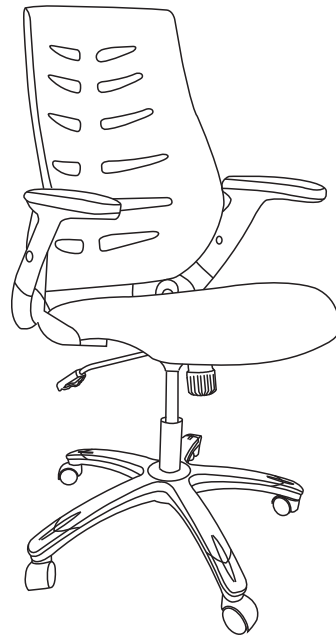
L
Washers
4 Units



M
Arm Caps
4 Units



N
Allen Wrench
1 Unit

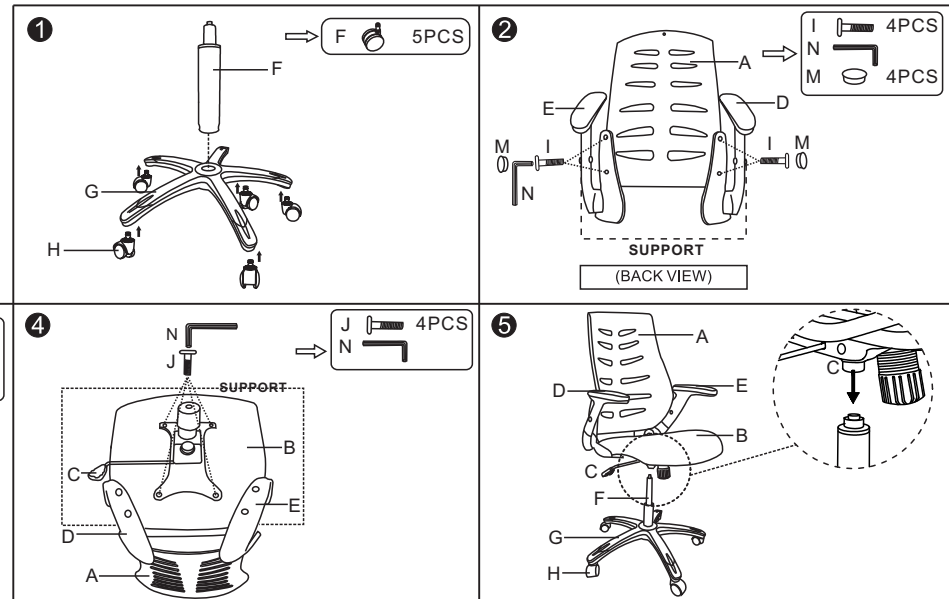


Assembly Instructions



Tools Needed: Allen Wrench - Provided
Please read all instructions before assembly.

- Step 1:** Insert Casters (H) into Chair Base(G) and insert Gas Lift(F) into the hole in the center of the Base (G).
- Step 2:** Place Chair Back (A) on a support,non-abrasive surface. Attach arms (D&E) to Back (A) using M6X25 mm Screws(I) Tighten with Allen Wrench (N). Cover screw holes with Arm Caps (M).
- Step 3:** Place Chair Seat (B) on a support,non-abrasive surface.Attach Arms (D&E) with Back (A) to Chair Seat (B) using four washers(L)and four M6x35mm Screws(K) as shown.Tighten with Allen Wrench (N).
- Step 4:** Place Seat Mechanism (C)on Chair Seat (B) and align the four holes in the mechanism with the holes in Chair Seat (B).so the front of the Seat Mechanism (C) faces the FRONT label on the bottom of the Chair Seat (B) Secure into place four M6X20 mm Screws (J).Tighten with Allen Wrench (N).
- Step 5:** Carefully place the assembled chair frame onto the Gas lift(E),aligning the hole in the Seat Mechanism (C) with the Gas Lift (E) press down on the Chair Seat (B) to secure in place.



WEIGHT CAPACITY: 275 lbs.

Assembly Notes:

During assembly, hand tighten screw only when all screws are in place, you may then tighten all screws completely.

CAUTION:

- Do not use this chair as a step ladder.
- Check for loose screws and tighten them every 6 months.

161 Tradition Trail Holly Springs, NC, 27540
800-520-7471 (voice) 919-362-4765 (fax)
919- 303-6389 (voice) www.ofminc.com
support@ofminc.com